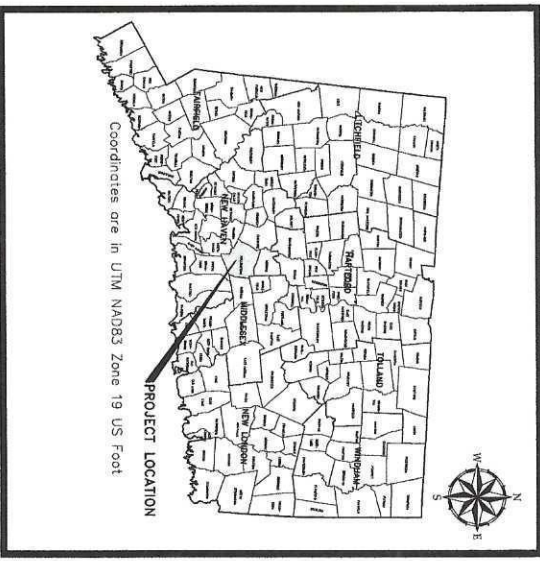


5 & 21 TOELLES ROAD WALLINGFORD CT SOIL REMEDIATION PROJECT

PROJECT NO. 0232596.00
DECEMBER, 2020
NOT FOR CONSTRUCTION



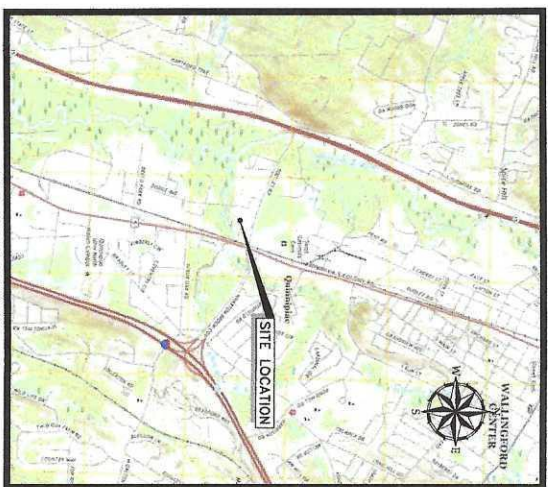
PROJECT LOCATION MAP

Sheet List Table

Sheet Number	Sheet Title	Sheet Description
1	GENERAL	COVER SHEET
2	G-000	GENERAL NOTES, ABBREVIATIONS AND LEGEND
3	G-001	KEY MAP
4	G-002	EXISTING CONDITIONS PLAN
5	C-000	EROSION AND SEDIMENTATION CONTROLS
6	C-001	SITE PREPARATION AND MATERIALS MANAGEMENT
7	C-002	PROPOSED LIMITS OF SOIL EXCAVATION
8	C-003	SITE RESTORATION PLAN
9	C-004	WETLAND RESTORATION PLAN
10	C-005	PROPOSED SITE SEQUENCING PLAN
11	C-006	CUT/FILL AND SECTIONS
12	C-007	SITE DETAILS 1
13	C-201	SITE DETAILS 2



213 Court Street, 4th Floor
Middletown, Connecticut 06457
888.265.8989 | www.woodardcurran.com
COMMITMENT & INTEGRITY DRIVE RESULTS



SITE LOCATION MAP



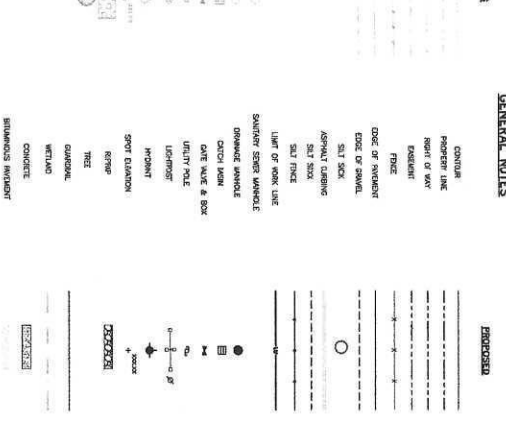
GENERAL NOTES:

1. BUREAU OF PUBLIC WORKS SHALL BE AT ALL TIMES UNDER THE CONTROL OF THE CONTRACTOR.
2. THE CONTRACTOR SHALL BE RESPONSIBLE FOR OBTAINING ALL NECESSARY PERMITS AND APPROVALS FROM THE BUREAU OF PUBLIC WORKS AND ALL OTHER AGENCIES WITH JURISDICTION OVER THE PROJECT.
3. THE CONTRACTOR SHALL BE RESPONSIBLE FOR OBTAINING ALL NECESSARY PERMITS AND APPROVALS FROM THE BUREAU OF PUBLIC WORKS AND ALL OTHER AGENCIES WITH JURISDICTION OVER THE PROJECT.
4. THE CONTRACTOR SHALL BE RESPONSIBLE FOR OBTAINING ALL NECESSARY PERMITS AND APPROVALS FROM THE BUREAU OF PUBLIC WORKS AND ALL OTHER AGENCIES WITH JURISDICTION OVER THE PROJECT.
5. THE CONTRACTOR SHALL BE RESPONSIBLE FOR OBTAINING ALL NECESSARY PERMITS AND APPROVALS FROM THE BUREAU OF PUBLIC WORKS AND ALL OTHER AGENCIES WITH JURISDICTION OVER THE PROJECT.
6. THE CONTRACTOR SHALL BE RESPONSIBLE FOR OBTAINING ALL NECESSARY PERMITS AND APPROVALS FROM THE BUREAU OF PUBLIC WORKS AND ALL OTHER AGENCIES WITH JURISDICTION OVER THE PROJECT.
7. THE CONTRACTOR SHALL BE RESPONSIBLE FOR OBTAINING ALL NECESSARY PERMITS AND APPROVALS FROM THE BUREAU OF PUBLIC WORKS AND ALL OTHER AGENCIES WITH JURISDICTION OVER THE PROJECT.
8. THE CONTRACTOR SHALL BE RESPONSIBLE FOR OBTAINING ALL NECESSARY PERMITS AND APPROVALS FROM THE BUREAU OF PUBLIC WORKS AND ALL OTHER AGENCIES WITH JURISDICTION OVER THE PROJECT.
9. THE CONTRACTOR SHALL BE RESPONSIBLE FOR OBTAINING ALL NECESSARY PERMITS AND APPROVALS FROM THE BUREAU OF PUBLIC WORKS AND ALL OTHER AGENCIES WITH JURISDICTION OVER THE PROJECT.
10. THE CONTRACTOR SHALL BE RESPONSIBLE FOR OBTAINING ALL NECESSARY PERMITS AND APPROVALS FROM THE BUREAU OF PUBLIC WORKS AND ALL OTHER AGENCIES WITH JURISDICTION OVER THE PROJECT.

EROSION CONTROL NOTES:

1. EROSION CONTROL MEASURES SHALL BE INSTALLED AS SHOWN ON DRAWINGS. THESE ARE THE MINIMUM REQUIREMENTS AND THE CONTRACTOR SHALL PROVIDE ADDITIONAL MEASURES AS NECESSARY TO PROTECT THE SOIL SURFACE FROM EROSION.
2. EROSION CONTROL MEASURES SHALL BE INSTALLED AND MAINTAINED THROUGHOUT THE LIFE OF THE PROJECT AND THROUGHOUT THE LIFE OF THE PROJECT.
3. EROSION CONTROL MEASURES SHALL BE INSTALLED AND MAINTAINED THROUGHOUT THE LIFE OF THE PROJECT AND THROUGHOUT THE LIFE OF THE PROJECT.
4. EROSION CONTROL MEASURES SHALL BE INSTALLED AND MAINTAINED THROUGHOUT THE LIFE OF THE PROJECT AND THROUGHOUT THE LIFE OF THE PROJECT.
5. EROSION CONTROL MEASURES SHALL BE INSTALLED AND MAINTAINED THROUGHOUT THE LIFE OF THE PROJECT AND THROUGHOUT THE LIFE OF THE PROJECT.
6. EROSION CONTROL MEASURES SHALL BE INSTALLED AND MAINTAINED THROUGHOUT THE LIFE OF THE PROJECT AND THROUGHOUT THE LIFE OF THE PROJECT.
7. EROSION CONTROL MEASURES SHALL BE INSTALLED AND MAINTAINED THROUGHOUT THE LIFE OF THE PROJECT AND THROUGHOUT THE LIFE OF THE PROJECT.
8. EROSION CONTROL MEASURES SHALL BE INSTALLED AND MAINTAINED THROUGHOUT THE LIFE OF THE PROJECT AND THROUGHOUT THE LIFE OF THE PROJECT.
9. EROSION CONTROL MEASURES SHALL BE INSTALLED AND MAINTAINED THROUGHOUT THE LIFE OF THE PROJECT AND THROUGHOUT THE LIFE OF THE PROJECT.
10. EROSION CONTROL MEASURES SHALL BE INSTALLED AND MAINTAINED THROUGHOUT THE LIFE OF THE PROJECT AND THROUGHOUT THE LIFE OF THE PROJECT.

GENERAL NOTES



EROSION CONTROL NOTES:

1. EROSION CONTROL MEASURES SHALL BE INSTALLED AS SHOWN ON DRAWINGS. THESE ARE THE MINIMUM REQUIREMENTS AND THE CONTRACTOR SHALL PROVIDE ADDITIONAL MEASURES AS NECESSARY TO PROTECT THE SOIL SURFACE FROM EROSION.
2. EROSION CONTROL MEASURES SHALL BE INSTALLED AND MAINTAINED THROUGHOUT THE LIFE OF THE PROJECT AND THROUGHOUT THE LIFE OF THE PROJECT.
3. EROSION CONTROL MEASURES SHALL BE INSTALLED AND MAINTAINED THROUGHOUT THE LIFE OF THE PROJECT AND THROUGHOUT THE LIFE OF THE PROJECT.
4. EROSION CONTROL MEASURES SHALL BE INSTALLED AND MAINTAINED THROUGHOUT THE LIFE OF THE PROJECT AND THROUGHOUT THE LIFE OF THE PROJECT.
5. EROSION CONTROL MEASURES SHALL BE INSTALLED AND MAINTAINED THROUGHOUT THE LIFE OF THE PROJECT AND THROUGHOUT THE LIFE OF THE PROJECT.
6. EROSION CONTROL MEASURES SHALL BE INSTALLED AND MAINTAINED THROUGHOUT THE LIFE OF THE PROJECT AND THROUGHOUT THE LIFE OF THE PROJECT.
7. EROSION CONTROL MEASURES SHALL BE INSTALLED AND MAINTAINED THROUGHOUT THE LIFE OF THE PROJECT AND THROUGHOUT THE LIFE OF THE PROJECT.
8. EROSION CONTROL MEASURES SHALL BE INSTALLED AND MAINTAINED THROUGHOUT THE LIFE OF THE PROJECT AND THROUGHOUT THE LIFE OF THE PROJECT.
9. EROSION CONTROL MEASURES SHALL BE INSTALLED AND MAINTAINED THROUGHOUT THE LIFE OF THE PROJECT AND THROUGHOUT THE LIFE OF THE PROJECT.
10. EROSION CONTROL MEASURES SHALL BE INSTALLED AND MAINTAINED THROUGHOUT THE LIFE OF THE PROJECT AND THROUGHOUT THE LIFE OF THE PROJECT.

TREE PROTECTION NOTES:

1. EROSION CONTROL MEASURES SHALL BE INSTALLED AS SHOWN ON DRAWINGS. THESE ARE THE MINIMUM REQUIREMENTS AND THE CONTRACTOR SHALL PROVIDE ADDITIONAL MEASURES AS NECESSARY TO PROTECT THE SOIL SURFACE FROM EROSION.
2. EROSION CONTROL MEASURES SHALL BE INSTALLED AND MAINTAINED THROUGHOUT THE LIFE OF THE PROJECT AND THROUGHOUT THE LIFE OF THE PROJECT.
3. EROSION CONTROL MEASURES SHALL BE INSTALLED AND MAINTAINED THROUGHOUT THE LIFE OF THE PROJECT AND THROUGHOUT THE LIFE OF THE PROJECT.
4. EROSION CONTROL MEASURES SHALL BE INSTALLED AND MAINTAINED THROUGHOUT THE LIFE OF THE PROJECT AND THROUGHOUT THE LIFE OF THE PROJECT.
5. EROSION CONTROL MEASURES SHALL BE INSTALLED AND MAINTAINED THROUGHOUT THE LIFE OF THE PROJECT AND THROUGHOUT THE LIFE OF THE PROJECT.
6. EROSION CONTROL MEASURES SHALL BE INSTALLED AND MAINTAINED THROUGHOUT THE LIFE OF THE PROJECT AND THROUGHOUT THE LIFE OF THE PROJECT.
7. EROSION CONTROL MEASURES SHALL BE INSTALLED AND MAINTAINED THROUGHOUT THE LIFE OF THE PROJECT AND THROUGHOUT THE LIFE OF THE PROJECT.
8. EROSION CONTROL MEASURES SHALL BE INSTALLED AND MAINTAINED THROUGHOUT THE LIFE OF THE PROJECT AND THROUGHOUT THE LIFE OF THE PROJECT.
9. EROSION CONTROL MEASURES SHALL BE INSTALLED AND MAINTAINED THROUGHOUT THE LIFE OF THE PROJECT AND THROUGHOUT THE LIFE OF THE PROJECT.
10. EROSION CONTROL MEASURES SHALL BE INSTALLED AND MAINTAINED THROUGHOUT THE LIFE OF THE PROJECT AND THROUGHOUT THE LIFE OF THE PROJECT.

ABBREVIATIONS*

SYMBOL	DESCRIPTION
AC	ACRYLIC CONCRETE
AD	ADHESIVE
AG	AGGREGATE
AH	ANCHORAGE
AL	ALUMINUM
AN	ANCHOR
AO	ANCHOR ORIENTED FIBER GLASS FIBER REINFORCED CONCRETE
AP	APPLY
AQ	APPLY WITH
AR	ANCHOR ROD
AS	ANCHOR SYSTEM
AT	ANCHOR TIE
AV	ANCHOR VULCANIZING
AW	ANCHOR WELD
AX	ANCHOR EXPANSION
AY	ANCHOR YIELD
AZ	ANCHOR ZINC
BA	BAR
BB	BARS
BC	BRICK
BD	BRICK DRAIN
BE	BRICK EXTERIOR
BF	BRICK FINISH
BG	BRICK GROUT
BH	BRICK HOLLOW
BI	BRICK INSULATION
BJ	BRICK JOINT
BK	BRICK LAY
BL	BRICK LAYER
BM	BRICK MASONRY
BN	BRICK NORTH
BO	BRICK ONE
BP	BRICK PAINT
BQ	BRICK PATTERN
BR	BRICK REINFORCEMENT
BS	BRICK SAND
BT	BRICK TILE
BV	BRICK VENEER
BW	BRICK WALL
BX	BRICK WORK
BY	BRICK YIELD
BZ	BRICK ZINC
CA	CONCRETE
CB	CONCRETE BOARD
CC	CONCRETE CURB
CD	CONCRETE CURB DRAIN
CE	CONCRETE CURB EXTERIOR
CF	CONCRETE CURB FINISH
CG	CONCRETE CURB GROUT
CH	CONCRETE CURB HOLLOW
CI	CONCRETE CURB INSULATION
CJ	CONCRETE CURB JOINT
CK	CONCRETE CURB LAY
CL	CONCRETE CURB LAYER
CM	CONCRETE CURB MASONRY
CN	CONCRETE CURB NORTH
CO	CONCRETE CURB ONE
CP	CONCRETE CURB PAINT
CQ	CONCRETE CURB PATTERN
CR	CONCRETE CURB REINFORCEMENT
CS	CONCRETE CURB SAND
CT	CONCRETE CURB TILE
CV	CONCRETE CURB VENEER
CW	CONCRETE CURB WALL
CX	CONCRETE CURB WORK
CY	CONCRETE CURB YIELD
CZ	CONCRETE CURB ZINC
DA	DRAINAGE
DB	DRAINAGE BARS
DC	DRAINAGE CURB
DD	DRAINAGE CURB DRAIN
DE	DRAINAGE CURB EXTERIOR
DF	DRAINAGE CURB FINISH
DG	DRAINAGE CURB GROUT
DH	DRAINAGE CURB HOLLOW
DI	DRAINAGE CURB INSULATION
DJ	DRAINAGE CURB JOINT
DK	DRAINAGE CURB LAY
DL	DRAINAGE CURB LAYER
DM	DRAINAGE CURB MASONRY
DN	DRAINAGE CURB NORTH
DO	DRAINAGE CURB ONE
DP	DRAINAGE CURB PAINT
DQ	DRAINAGE CURB PATTERN
DR	DRAINAGE CURB REINFORCEMENT
DS	DRAINAGE CURB SAND
DT	DRAINAGE CURB TILE
DV	DRAINAGE CURB VENEER
DW	DRAINAGE CURB WALL
DX	DRAINAGE CURB WORK
DY	DRAINAGE CURB YIELD
DZ	DRAINAGE CURB ZINC

5 & 21 TOLLES ROAD WALLINGFORD CT

SOIL REMEDIATION PROJECT

DATE: 2/28/21	SCALE: 3/8" = 1'-0"
DATE: 2/28/21	SCALE: 3/8" = 1'-0"

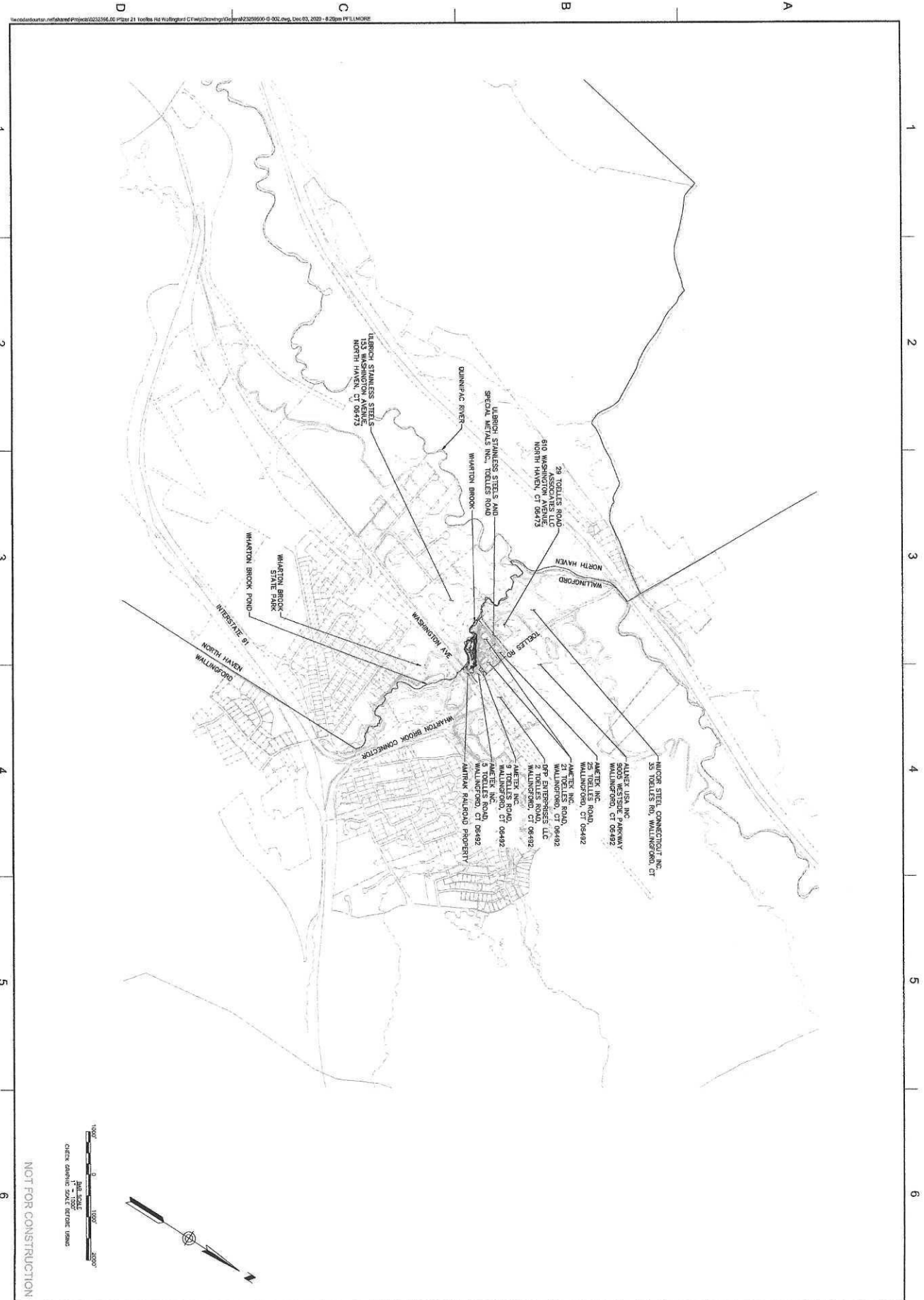
NOT FOR CONSTRUCTION



GENERAL NOTES, ABBREVIATIONS AND LEGEND

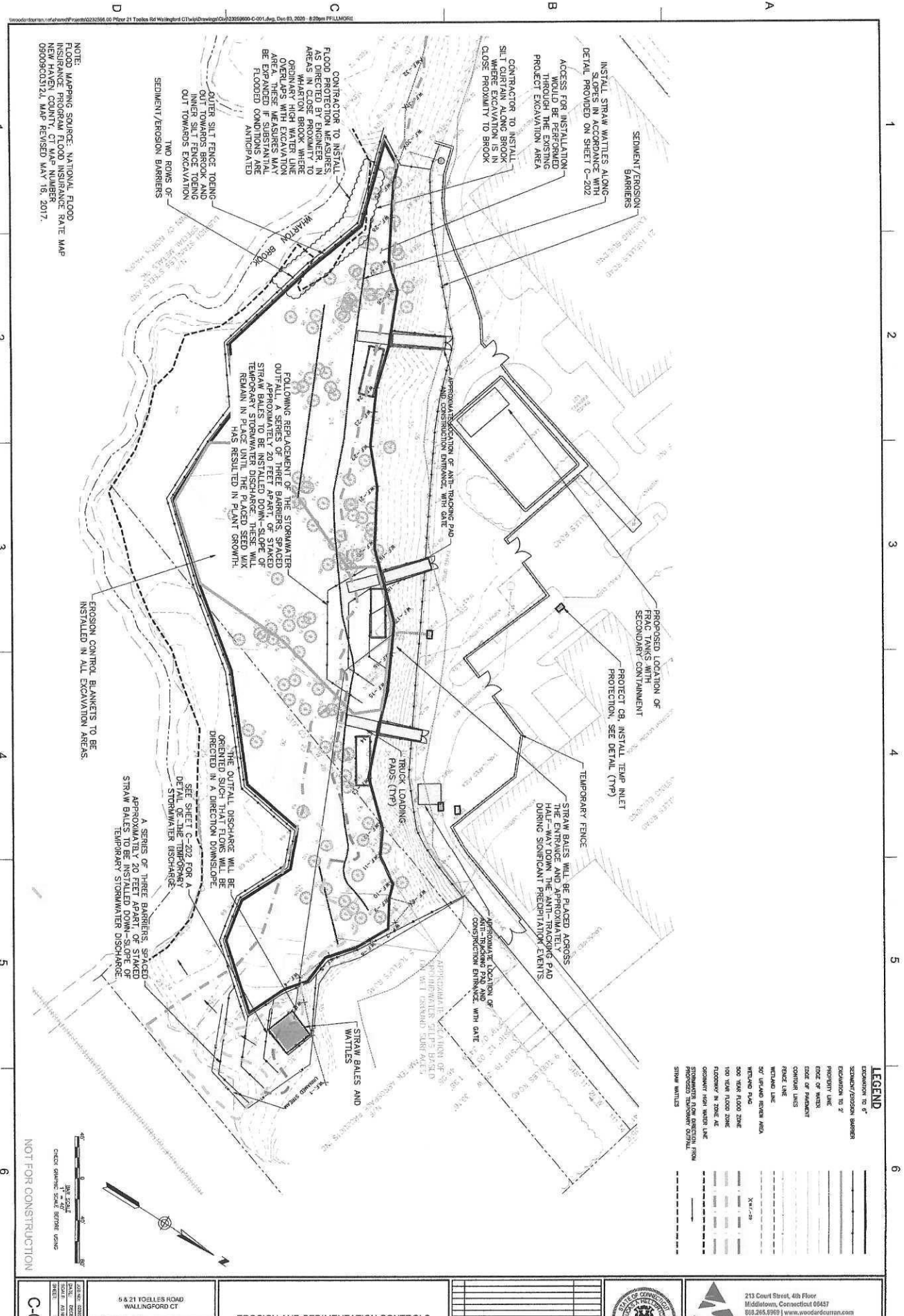
REVISION	DESCRIPTION	DATE
1	ISSUED BY: JN	1/15/21
2	DRAWN BY: CB	1/15/21

	213 Court Street, 4th Floor Middletown, Connecticut 06457 888.265.5960 www.woodardcurran.com	WOODARD & CURRAN	COMMITMENT & INTEGRITY DRIVE RESULTS

2024 SHEET



G-002	5 & 21 TOELLES ROAD WALLINGFORD CT	KEY MAP	DATE: _____ DESIGNED BY: JN CHECKED BY: LH DRAWN BY: DB		 <p>213 Court Street, 4th Floor Middletown, Connecticut 06457 860.285.0900 www.woodardcurran.com</p> <p>COMMITMENT & INTEGRITY DRIVE RESULTS</p> <p><small>THIS DOCUMENT IS THE PROPERTY OF WOODARD & CURRAN INC. AND ITS CLIENTS. REPRODUCTION OR DISSEMINATION WITHOUT WRITTEN PERMISSION IS PROHIBITED.</small></p>
--------------	---	----------------	--	---	--



NOTE:
 FLOOD MAPPING SOURCE: NATIONAL FLOOD INSURANCE PROGRAM FLOOD INSURANCE RATE MAP NEW HAVEN COUNTY, CT MAP NUMBER 090900321L, MAP REVISED JAN 19, 2017.



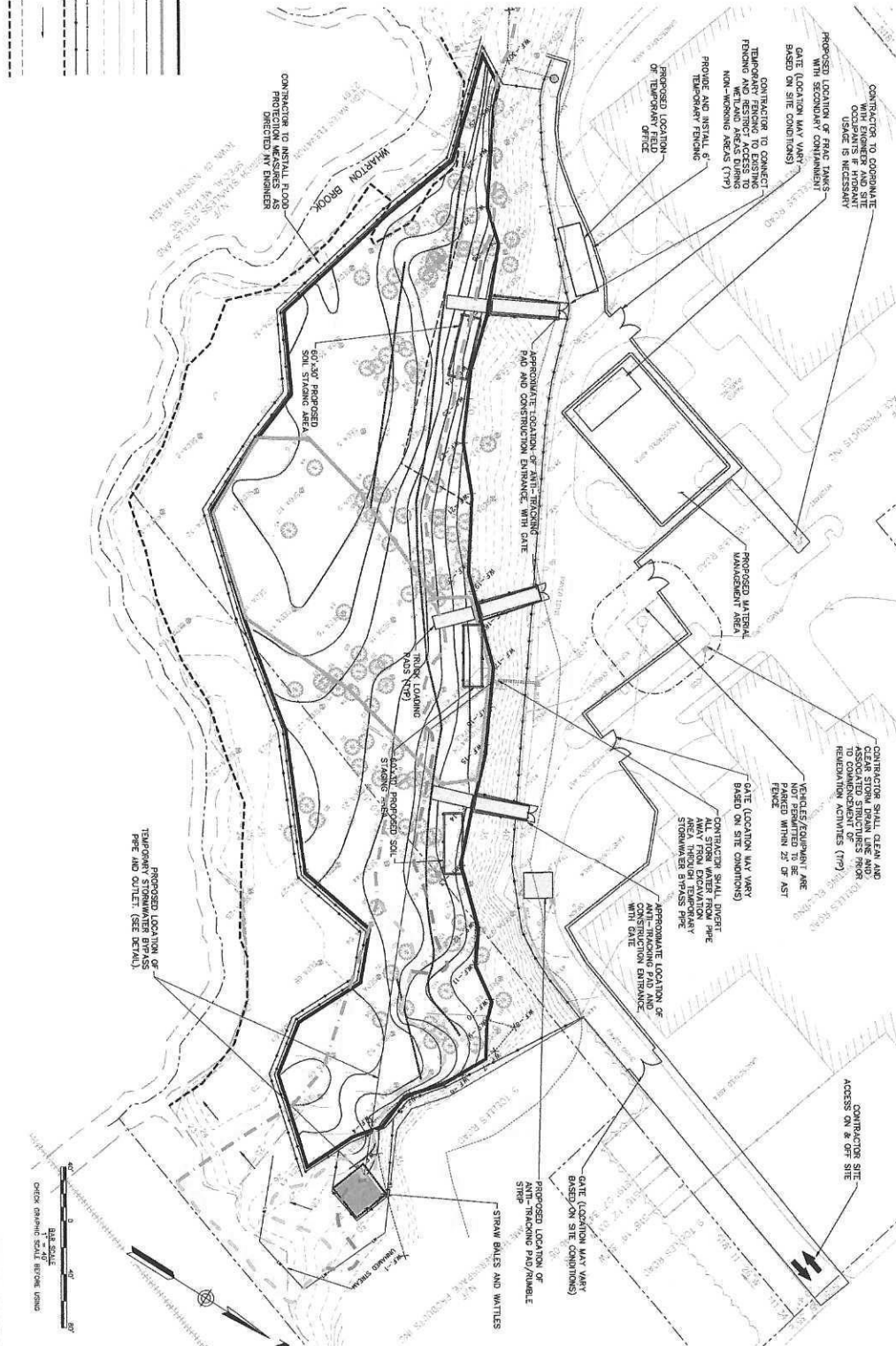
LEGEND

EXCAVATION TO 2'	--- (dashed line)
SEDIMENT/EROSION BARRIERS	--- (dashed line)
EROSION TO 2'	--- (dashed line)
PROTECT LINE	--- (dashed line)
FOOT OF BANK	--- (dashed line)
FOOT OF FILLMENT	--- (dashed line)
CONCRETE LINES	--- (dashed line)
PROTECT LINE	--- (dashed line)
BY (L) AND (R) FROM ADA	--- (dashed line)
WETTED FLAG	--- (dashed line)
500 YARD FLOOD ZONE	--- (dashed line)
100 YARD FLOOD ZONE	--- (dashed line)
FLOODWAY IN ZONE AS	--- (dashed line)
ORDINARY HIGH WATER LINE	--- (dashed line)
PROPOSED FLOODWAY CONTROL ROW	--- (dashed line)
STRAW WATTLES	--- (dashed line)

5 & 21 TOLLES ROAD WALLINGFORD CT	EROSION AND SEDIMENTATION CONTROLS		213 Court Street, 4th Floor Middletown, Connecticut 06457 866.265.9993 www.woodardcurran.com
SOIL REMEDIATION PROJECT	REVISED BY: GRC/PTW DESIGNED BY: JH DRAWN BY: CB		WOODARD & CURRAN COMMITMENT & INTEGRITY DRIVE RESULTS
C-001	DATE: DECEMBER 2020 SCALE: AS SHOWN SHEET: 5 OF 5	THIS DOCUMENT IS THE PROPERTY OF WOODARD & CURRAN INC. AND IS TO BE USED ONLY FOR THE PROJECT AND SITE SPECIFICALLY IDENTIFIED HEREIN. REPRODUCTION OR DISSEMINATION WITHOUT WRITTEN PERMISSION IS PROHIBITED.	

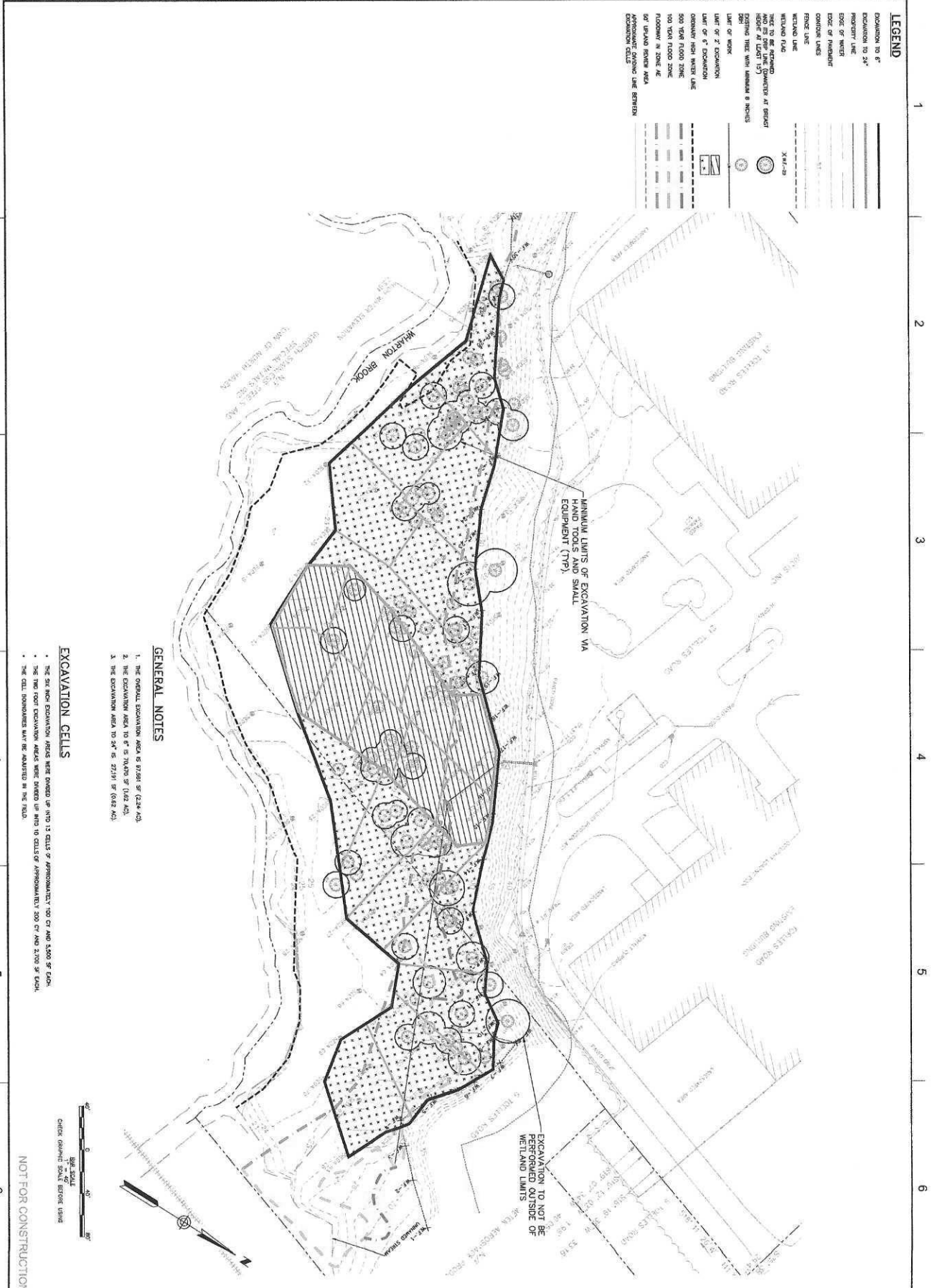
- ### GENERAL NOTES
1. THE ALLOWED LOCATIONS FOR CONTRACTOR'S SITE ACCESS, LABORER AREAS, AND STORAGE ARE SHOWN ON THIS PLAN.
 2. CONTRACTOR TO CLEAN UP AND REPAIR ALL ASSIGNED STRUCTURES SHOWN ON THIS PLAN TO THE STORM DRAIN OUTLET.
 3. THE CONTRACTOR SHALL MAINTAIN, IMPROVE, AND KEEP CURRENT A TRAFFIC CONTROL AND SITE ACCESS PLAN, TRAFFIC CONTROL PLAN, AND SITE ACCESS PLAN. THE CONTRACTOR SHALL MAINTAIN AND KEEP CURRENT A TRAFFIC CONTROL PLAN AND SITE ACCESS PLAN. THE CONTRACTOR SHALL MAINTAIN AND KEEP CURRENT A TRAFFIC CONTROL PLAN AND SITE ACCESS PLAN.
 4. THE CONTRACTOR SHALL MAINTAIN AND IMPROVE ALL EXISTING TEMPORARY FACILITIES, TRAFFIC CONTROL, WARNING, AND SIGNAGE. TEMPORARY FACILITIES AND SIGNS SHALL BE REMOVED AND RESTORED TO ORIGINAL CONDITION AT THE END OF THE WORK PERIOD.
 5. THE LOCATION FOR ALTERNATE ENTRY AND EXIT SHALL BE DETERMINED TO ALLOW ACCESS TO EXISTING PPE STORAGE, STORAGE, AND STORAGE.
 6. AT THE END OF THE WORK PERIOD, ALL ITEMS MUST BE RETURNED TO THE PLAN AND TRAFFIC SIGNALS, AND SIGNAGE SHALL BE REMOVED.
 7. EQUIPMENT LIMITED WITHIN THE LIMITS OF EXCAVATION SHALL BE MAINTAINED AT THE END OF EACH WORK DAY AND SHALL BE MAINTAINED WITHIN THE LIMITS OF EXCAVATION.

- ### LEGEND
- EXPANSION TO 6"
 - EXPANSION TO 2"
 - PROPERTY LINE
 - EDGE OF WATER
 - EDGE OF PAVEMENT
 - CONTOUR LINES
 - FENCE LINE
 - SEMI-DIAPHRAGM BARRIER
 - ORIGINALLY HIGH WATER LINE
 - STORMWATER FLOW DIRECTION FROM PROPOSED STORMWATER CONTROL
 - SC ORANGE REVIEW AREA
 - STRAW MATS

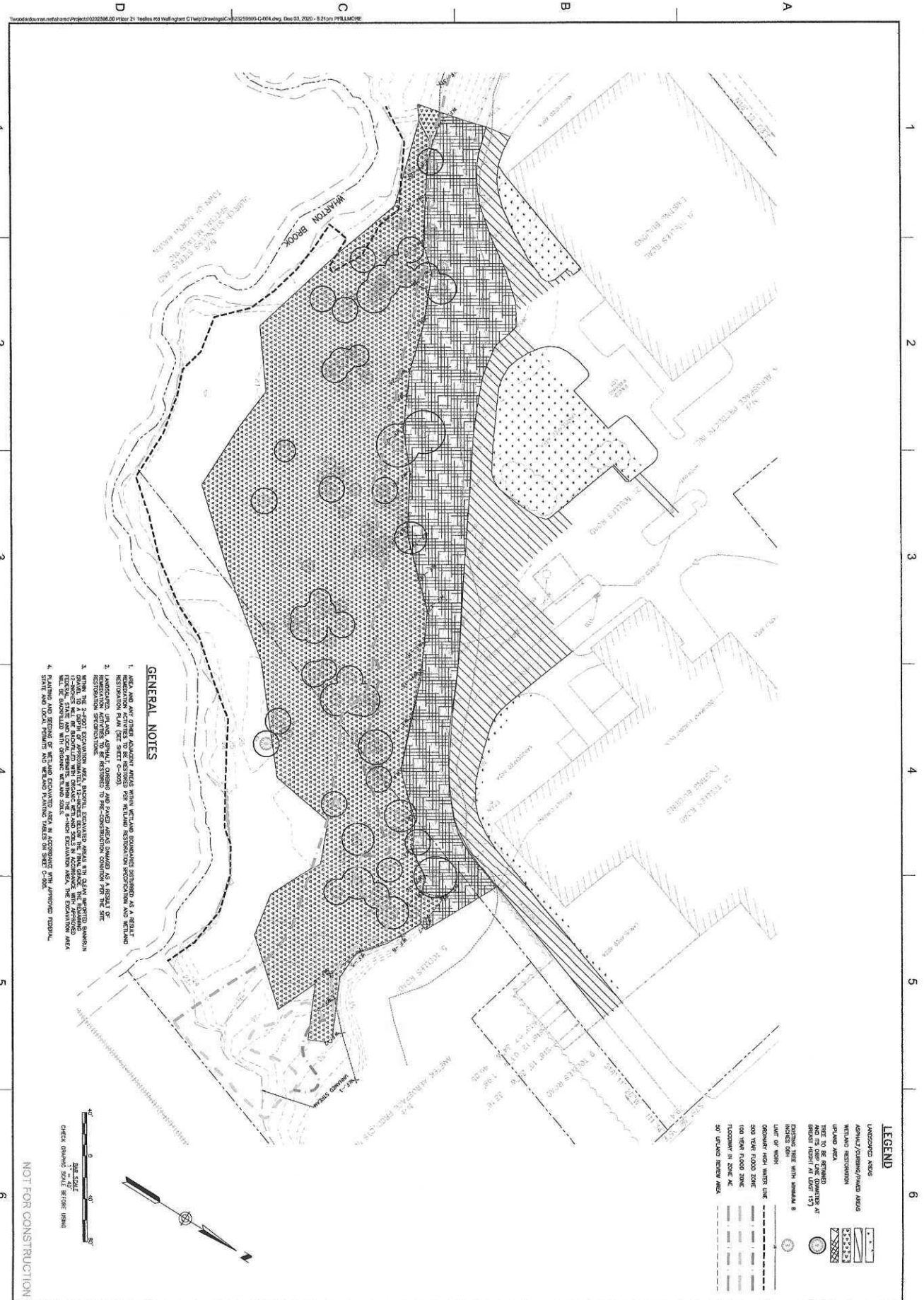


NOT FOR CONSTRUCTION

C-002	5 & 21 TOLLES ROAD WALLINGFORD CT	SITE PREPARATION AND MATERIALS MANAGEMENT		213 Court Street, 4th Floor Middletown, Connecticut 06447 888.295.0993 www.woodardcurran.com
	SOIL REMEDIATION PROJECT			
DATE: 08/13/2020 DRAWN BY: CB	CHECKED BY: JH DATE: 08/13/2020	PROJECT NO: 2019-002A	SCALE: AS SHOWN	SHEET: 1 OF 3



C-003 DATE: 12/03/2020 SCALE: AS SHOWN SHEET: 1 OF 3	5 & 21 TOELLES ROAD WALLINGFORD CT	PROPOSED LIMITS OF SOIL EXCAVATION	<table border="1"> <tr> <td>DESIGNED BY: JM</td> <td>CHECKED BY: LH</td> <td>DATE:</td> </tr> <tr> <td>DRAWN BY: CB</td> <td>DATE:</td> <td></td> </tr> </table>	DESIGNED BY: JM	CHECKED BY: LH	DATE:	DRAWN BY: CB	DATE:			<p>213 Court Street, 4th Floor Middletown, Connecticut 06457 866.295.8993 www.woodardcurran.com</p> <p>COMMITMENT & INTEGRITY DRIVE RESULTS</p> <p>THIS DOCUMENT IS THE PROPERTY OF WOODARD & CURRAN AND ITS CLIENT. REPRODUCTION OR MISAPPLICATION WITHOUT WRITTEN PERMISSION IS PROHIBITED.</p>
	DESIGNED BY: JM	CHECKED BY: LH	DATE:								
	DRAWN BY: CB	DATE:									
SOIL REMEDIATION PROJECT											
NOT FOR CONSTRUCTION											

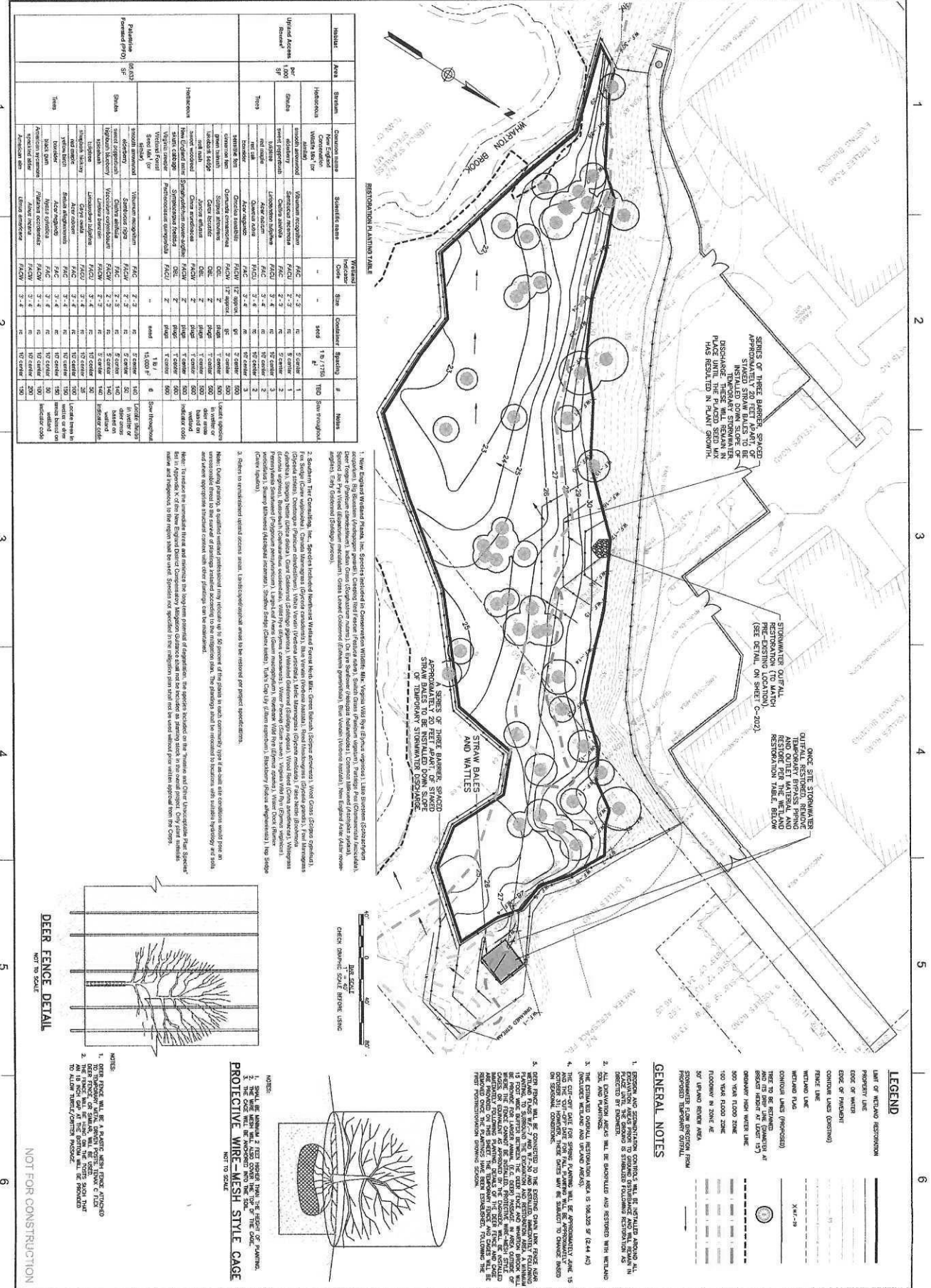


- GENERAL NOTES**
1. AREA AND ANY OTHER REMEDIATION AREAS WITHIN WETLANDS DETERMINED TO BE A WETLAND RESTORATION PLAN (SEE SHEET C-003).
 2. LANDSCAPE, PLANTING, ASPHALT, CURBING AND PAVED AREAS SHOWN AS A RESULT OF RESTORATION SPECIFICATIONS.
 3. WITHIN THE 2-FOOT ELEVATION AREA, SPECIAL EXCAVATION AREAS IN THE CLEAN UP/GRUBBING ZONE SHALL BE BACKFILLED WITH GRAVEL, BENTONITE AND SOILS IN ACCORDANCE WITH APPROVED WETLAND RESTORATION SPECIFICATIONS. SPECIAL EXCAVATION AREAS SHALL BE BACKFILLED WITH GRAVEL, BENTONITE AND SOILS IN ACCORDANCE WITH APPROVED WETLAND RESTORATION SPECIFICATIONS.
 4. PLANTING AND SETTING OF WETLAND ELEVATION AREA IN ACCORDANCE WITH APPROVED FEDERAL, STATE AND LOCAL PERMITS AND INCLUDING PLANTING TABLE ON SHEET C-004.



NOT FOR CONSTRUCTION

C-004 DATE: DECEMBER 2020 SCALE: AS SHOWN SHEET: 5 OF 9	5 & 21 TOELLES ROAD WALLINGFORD CT SOIL REMEDIATION PROJECT	SITE RESTORATION PLAN	NOT DESIGNED BY: JH CHECKED BY: LH DRAWN BY: CB			213 Court Street, 4th Floor Middletown, Connecticut 06457 860.265.9969 www.woodardcurran.com COMMITMENT & INTEGRITY DRIVE RESULTS
	<small>THIS DOCUMENT IS THE PROPERTY OF WOODARD & CURRAN, INC. AND ITS CLIENT. REPRODUCTION OR MODIFICATION WITHOUT WRITTEN PERMISSION IS PROHIBITED.</small>					



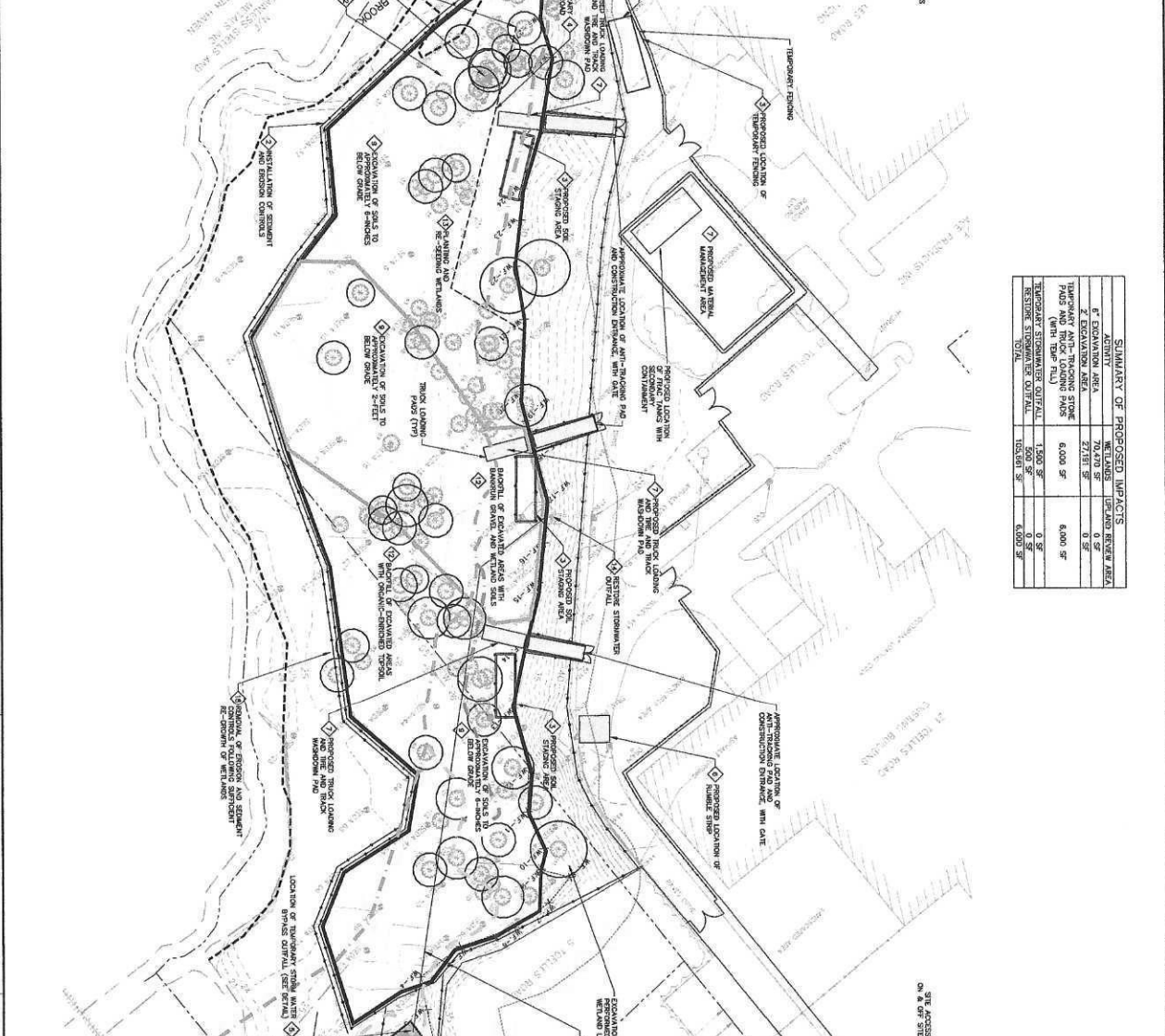
Material	Area	System	Component	Scientific Name	Indicator	Shrub	Container	Spacing	#	Notes
Hydrilla	100	Hydrilla	Hydrilla	<i>Hydrilla verticillata</i>	HYD	100	100	100	100	See Note 1
Hydrilla	100	Hydrilla	Hydrilla	<i>Hydrilla verticillata</i>	HYD	100	100	100	100	See Note 1
Hydrilla	100	Hydrilla	Hydrilla	<i>Hydrilla verticillata</i>	HYD	100	100	100	100	See Note 1
Hydrilla	100	Hydrilla	Hydrilla	<i>Hydrilla verticillata</i>	HYD	100	100	100	100	See Note 1
Hydrilla	100	Hydrilla	Hydrilla	<i>Hydrilla verticillata</i>	HYD	100	100	100	100	See Note 1

PROPOSED PROJECT SEQUENCING APPROACH

- 1. RESTORATION OF EQUIPMENT AND SUPPLIES TO THE SITE.
- 2. INSTALLATION OF EROSION AND SEDIMENT CONTROLS AROUND THE PERIMETER OF THE EXCAVATION, AS DETAILED ON DRAWING.
- 3. SET-UP OF FIELD OFFICES AND TEMPORARY FACILITIES (UTILITY, TEMPORARY FENCING, ETC).
- 4. INSTALLATION OF CONSTRUCTION DRAINAGE, WITH APPROVED TEMPORARY ANTI-EROSION PANS AND TEMPORARY FILL PILES, AND APPROVED PILING AND DRAINAGE DRAINAGE DRAINAGE PILES.
- 5. EXCAVATION AND REMEDIATION OF CONTAMINATED AREAS, AS WELL AS GROUND WATER OBSERVATION AND MONITORING AROUND THE PERIMETER OF THE EXCAVATION.
- 6. INSTALLATION OF REMEDIATION SYSTEMS.
- 7. SET-UP OF MATERIAL MANAGEMENT YARD, STORAGE AREA, AND DECONTAMINATION AREA.
- 8. SET-UP OF EROSION AND SEDIMENT CONTROLS (SEE DRAWING).
- 9. EXCAVATION OF SOILS TO A DEPTH OF 6-INCHES IN EROSION AND SEDIMENT CONTROL AREAS.
- 10. EXCAVATION OF SOILS TO A DEPTH OF 6-INCHES IN EROSION AND SEDIMENT CONTROL AREAS.
- 11. AT THE LOCATIONS WHERE SOILS ARE NOT DEGRADED, EXCAVATION OF SOILS TO A DEPTH OF 6-INCHES TO THE TOP OF THE BEST AVAILABLE UNDERLAYER SHALL BE PERMITTED. THESE AREAS SHALL BE PROTECTED FROM BROADCASTING.
- 12. AS SOIL IS EXCAVATED, STOCKPILES AND DRAINAGE PROTECTION OF SOILS SHALL BE MAINTAINED WITHIN THE 2-FOOT EXCAVATION AREA. SOILS OF EXCAVATED AREAS WITH CLEAN APPEARANCE SHALL BE STORED IN PILES, COVERED WITH AN APPROVED WATER-RESISTANT BARRIER WITH GROUND-ANCHORED TIEBACKS, IN ACCORDANCE WITH APPROVED REMEDIAL STATE BROADCASTING WITH GROUND-ANCHORED TIEBACKS.
- 13. PLAYING AND STORAGE OF RECLAIM EXCAVATED AREAS AND TEMPORARY OFFICIAL AREA IN ACCORDANCE WITH APPROVED REMEDIAL STATE BROADCASTING WITH GROUND-ANCHORED TIEBACKS.
- 14. EXCAVATION OF SOILS TO A DEPTH OF 6-INCHES IN EROSION AND SEDIMENT CONTROL AREAS.
- 15. EXCAVATION OF SOILS TO A DEPTH OF 6-INCHES IN EROSION AND SEDIMENT CONTROL AREAS.
- 16. EXCAVATION OF SOILS TO A DEPTH OF 6-INCHES IN EROSION AND SEDIMENT CONTROL AREAS.
- 17. EXCAVATION OF SOILS TO A DEPTH OF 6-INCHES IN EROSION AND SEDIMENT CONTROL AREAS.
- 18. EXCAVATION OF SOILS TO A DEPTH OF 6-INCHES IN EROSION AND SEDIMENT CONTROL AREAS.
- 19. EXCAVATION OF SOILS TO A DEPTH OF 6-INCHES IN EROSION AND SEDIMENT CONTROL AREAS.
- 20. EXCAVATION OF SOILS TO A DEPTH OF 6-INCHES IN EROSION AND SEDIMENT CONTROL AREAS.
- 21. EXCAVATION OF SOILS TO A DEPTH OF 6-INCHES IN EROSION AND SEDIMENT CONTROL AREAS.
- 22. EXCAVATION OF SOILS TO A DEPTH OF 6-INCHES IN EROSION AND SEDIMENT CONTROL AREAS.
- 23. EXCAVATION OF SOILS TO A DEPTH OF 6-INCHES IN EROSION AND SEDIMENT CONTROL AREAS.
- 24. EXCAVATION OF SOILS TO A DEPTH OF 6-INCHES IN EROSION AND SEDIMENT CONTROL AREAS.
- 25. EXCAVATION OF SOILS TO A DEPTH OF 6-INCHES IN EROSION AND SEDIMENT CONTROL AREAS.
- 26. EXCAVATION OF SOILS TO A DEPTH OF 6-INCHES IN EROSION AND SEDIMENT CONTROL AREAS.
- 27. EXCAVATION OF SOILS TO A DEPTH OF 6-INCHES IN EROSION AND SEDIMENT CONTROL AREAS.
- 28. EXCAVATION OF SOILS TO A DEPTH OF 6-INCHES IN EROSION AND SEDIMENT CONTROL AREAS.
- 29. EXCAVATION OF SOILS TO A DEPTH OF 6-INCHES IN EROSION AND SEDIMENT CONTROL AREAS.
- 30. EXCAVATION OF SOILS TO A DEPTH OF 6-INCHES IN EROSION AND SEDIMENT CONTROL AREAS.
- 31. EXCAVATION OF SOILS TO A DEPTH OF 6-INCHES IN EROSION AND SEDIMENT CONTROL AREAS.
- 32. EXCAVATION OF SOILS TO A DEPTH OF 6-INCHES IN EROSION AND SEDIMENT CONTROL AREAS.
- 33. EXCAVATION OF SOILS TO A DEPTH OF 6-INCHES IN EROSION AND SEDIMENT CONTROL AREAS.
- 34. EXCAVATION OF SOILS TO A DEPTH OF 6-INCHES IN EROSION AND SEDIMENT CONTROL AREAS.
- 35. EXCAVATION OF SOILS TO A DEPTH OF 6-INCHES IN EROSION AND SEDIMENT CONTROL AREAS.
- 36. EXCAVATION OF SOILS TO A DEPTH OF 6-INCHES IN EROSION AND SEDIMENT CONTROL AREAS.
- 37. EXCAVATION OF SOILS TO A DEPTH OF 6-INCHES IN EROSION AND SEDIMENT CONTROL AREAS.
- 38. EXCAVATION OF SOILS TO A DEPTH OF 6-INCHES IN EROSION AND SEDIMENT CONTROL AREAS.
- 39. EXCAVATION OF SOILS TO A DEPTH OF 6-INCHES IN EROSION AND SEDIMENT CONTROL AREAS.
- 40. EXCAVATION OF SOILS TO A DEPTH OF 6-INCHES IN EROSION AND SEDIMENT CONTROL AREAS.

LEGEND

[Symbol]	EXCAVATION TO 2'
[Symbol]	EXCAVATION TO 3'
[Symbol]	PROPERTY LINE
[Symbol]	EDGE OF WALKWAY
[Symbol]	EDGE OF DRIVEWAY
[Symbol]	CURTAIN WALLS
[Symbol]	PRICE LINE
[Symbol]	SEDIMENT / EROSION CONTROL
[Symbol]	AMBIENT WATER TABLE
[Symbol]	GROUNDWATER TABLE
[Symbol]	PROPOSED HIGH WATER LINE
[Symbol]	500 YEAR FLOOD ZONE
[Symbol]	100 YEAR FLOOD ZONE
[Symbol]	FLOODWAY IN ZONE A
[Symbol]	60' WIDE DRIVEWAY

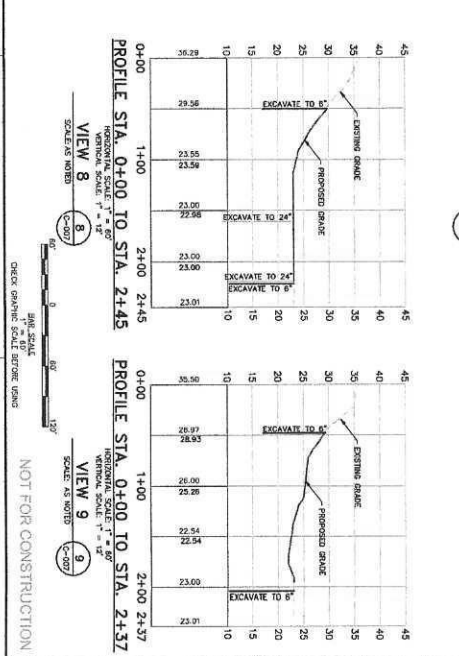
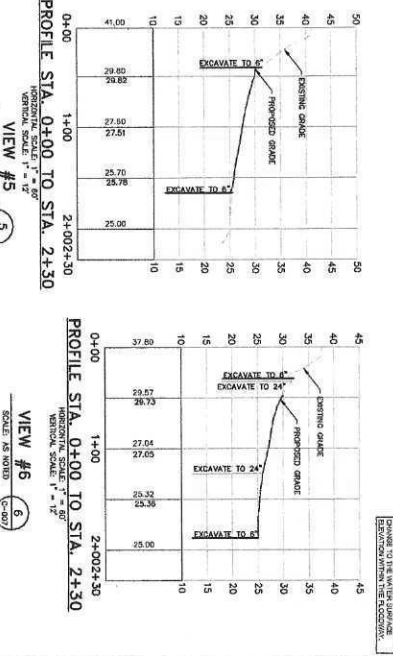
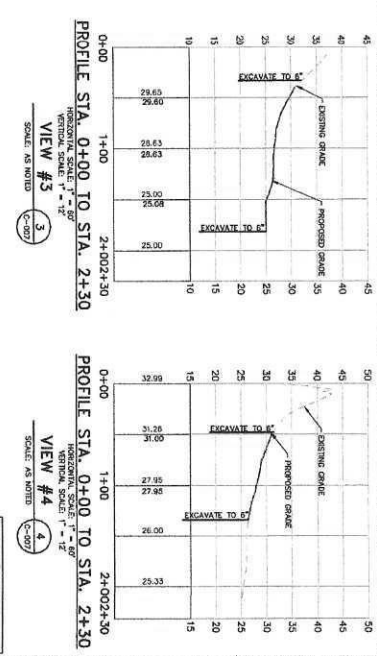
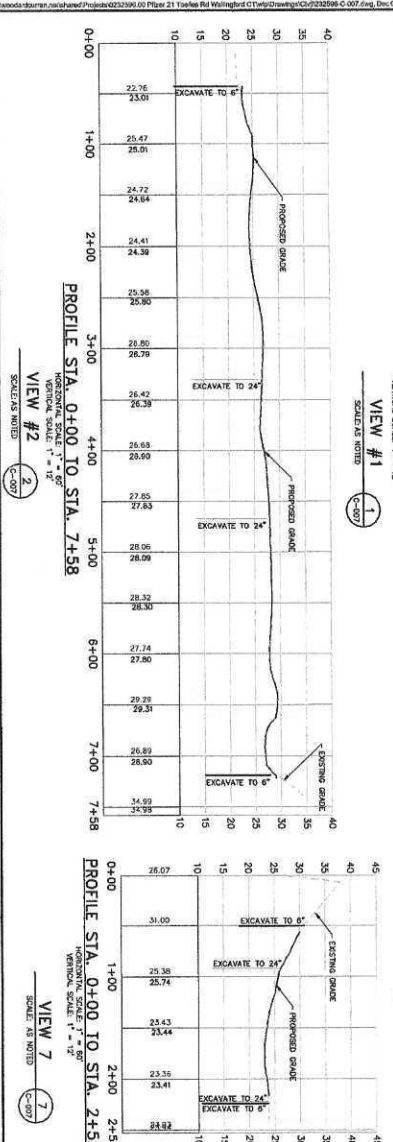
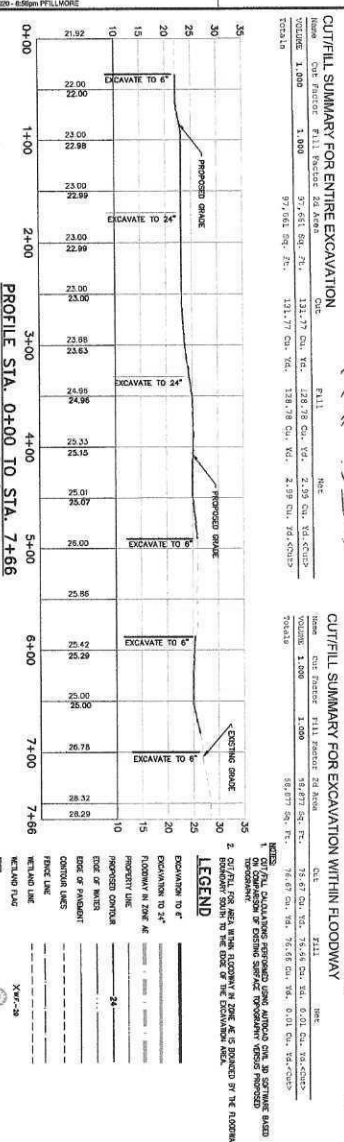
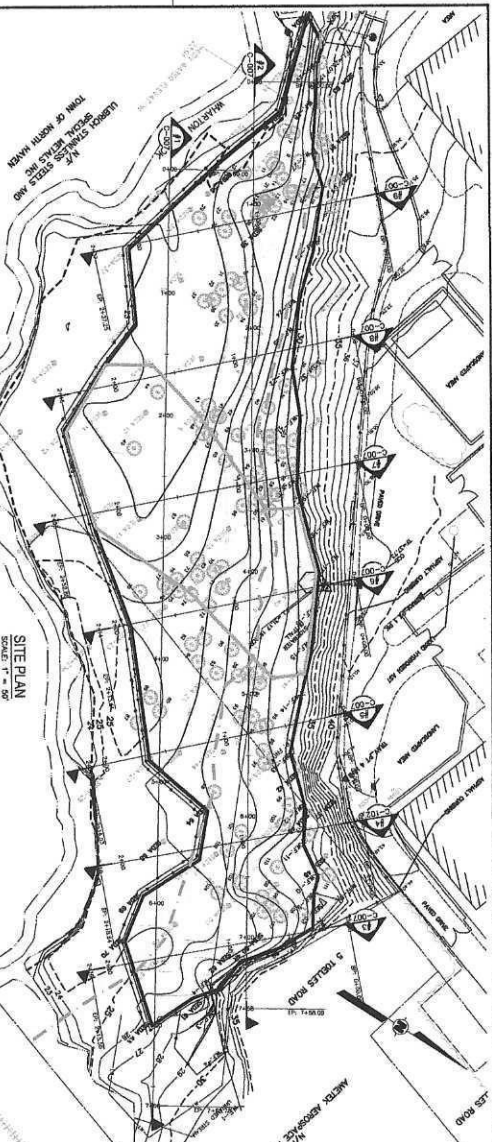


SUMMARY OF PROPOSED IMPACTS

ACTIVITY	AREA (SQ FT)	TYPE OF IMPACT	IMPACT AREA (SQ FT)	IMPACT TYPE	IMPACT SEVERITY
EXCAVATION AREA	70,470 SF	LAND REUSE AREA	0 SF	0 SF	0 SF
TEMPORARY ANTI-EROSION PANS AND DRAINAGE PILES (WITH TIEBACKS)	6,000 SF	6,000 SF	0 SF	0 SF	0 SF
TEMPORARY STORAGE OFFICIAL	1,500 SF	1,500 SF	0 SF	0 SF	0 SF
RESTORATION OF EQUIPMENT	500 SF	500 SF	0 SF	0 SF	0 SF
TOTAL	78,470 SF	13,000 SF	0 SF	0 SF	0 SF

NOT FOR CONSTRUCTION

DATE: 02/12/2015
 CHECK DRAWING SCALE: BEFORE USING



WOODARD CURRAN
213 Court Street, 4th Floor
Middletown, Connecticut 06457
888.305.6901 | www.woodardcurran.com

COMMITMENT & INTEGRITY DRIVE RESULTS
As a contractor, the property of Woodard & Curran Inc. and its clients, reputation for integrity and quality work is paramount.

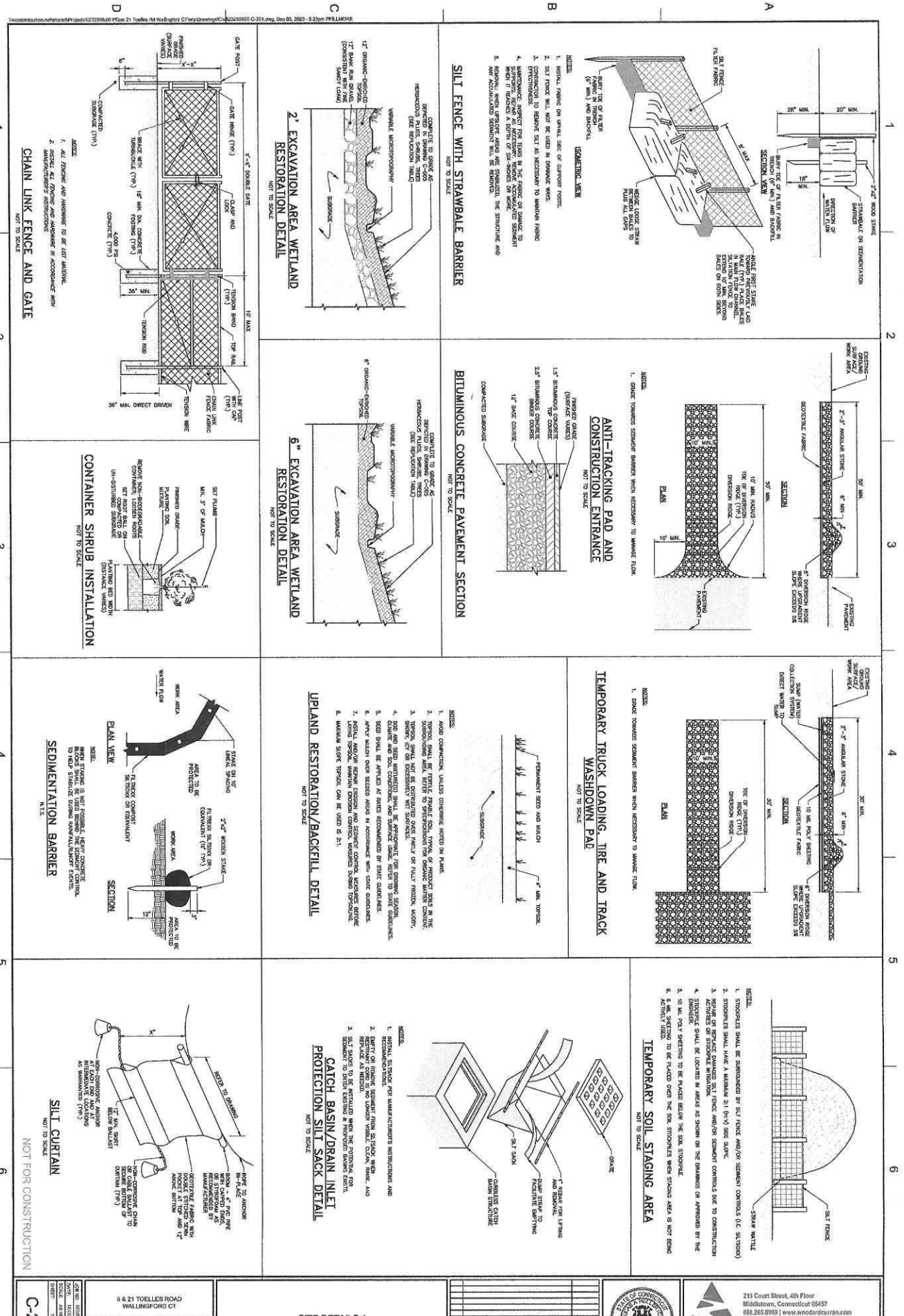
CUT/FILL AND SECTIONS

NO.	DESCRIPTION	DATE
DESIGNED BY: LHL	CHECKED BY: LHL	
DRAWN BY: CRW	DATE: 12/06/07	

SOIL REMEDIATION PROJECT

5 & 21 TOELLES ROAD
WALLINGFORD CT

C-007



<p>DATE: 05/09/2018 SCALE: AS SHOWN SHEET: 7 OF 7</p>		<p>6 & 21 TOLLEYS ROAD WALLINGFORD CT</p>		<p>SOIL REMEDIATION PROJECT</p>	
<p>SITE DETAILS 1</p>					
<p>WOODWARD & CURRAN 213 Court Street, 4th Floor Middletown, Connecticut 06457 888.265.8999 www.woodwardcurran.com</p>					
<p>COMMITMENT & INTEGRITY DRIVE RESULTS</p>					

